

FAMILY DEDICATION AND BLESSING

Believing that children are a gift from God, MPBC offers a sacred service of Family Dedication and Blessing. This beautiful liturgical event takes place on a Sunday morning at the opening of our worship hour in the sanctuary. It is an opportunity for parents and church members to voice aloud a promise to nurture children in the ways of God's love. If you are interested in learning more, please contact Rev. Patterson.

FAITH DEVELOPMENT

We nurture faith in children by building trust. When a young child's needs are met in a loving and timely fashion trust is built. It is our hope that later in life, this trust will be transferred to God. We want all children to experience church as a safe and happy place. During these early years when a spiritual foundation is taking shape, we use familiar songs ("Jesus Loves Me") and introduce the vocabulary of faith ("Love," "Joy," "God") while having fun with biblical stories, music, art.

We strive to make your child's experience in our Nursery, Toddlers' Room and Twos' Room a happy one. If you have suggestions or concerns, please let us know by contacting our Early Childhood Minister:

Cheryl Collins Patterson
REV. CHERYL COLLINS PATTERSON

*At any age children are welcome to be
with their parents during Worship.*

MESSY ART MORNING

Every Tuesday, beginning September 14th, our youngest children (two year-olds and YOUNGER), meet with their parent for an hour of art, Bible storytelling and singing. Join us upstairs, in God's Garden, Room 213 (at the end of the hallway) from 9:00 to 10:00 a.m.

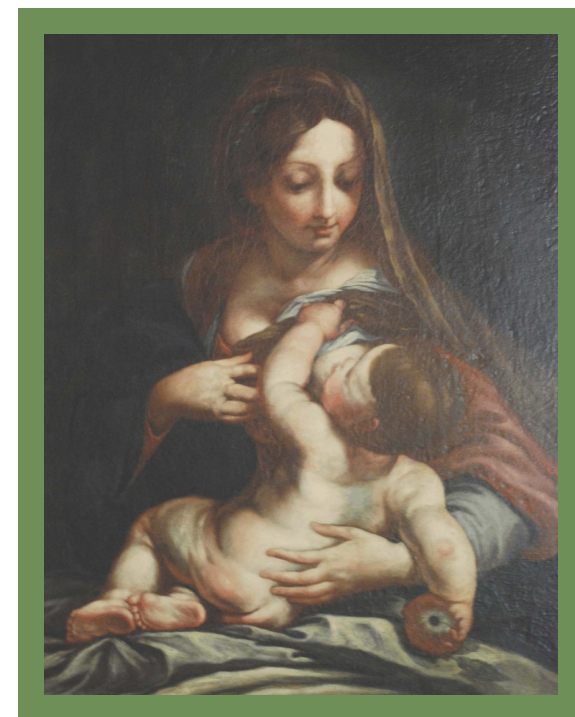


MYERS PARK BAPTIST CHURCH

Reverend Cheryl Collins Patterson
Early Childhood Minister
1900 Queens Road • Charlotte, NC 28207-0001
704.334.7232 ext. 52
cpatterson@mpbconline.org
www.mpbconline.org

Cover Art
Paolo DeMatteis (1662-1728), *Mary and the Christ Child*,
located in the MPBC Library

Welcome to the Nursery



at
Myers Park Baptist Church

*where children and their
families grow in God's love*

SEPTEMBER 2011 - MAY 2012

WELCOME TO THE NURSERY AT MYERS PARK BAPTIST CHURCH

It is our deep gladness and a great privilege to welcome families with infants and babies to our Nursery. Located next to the choir's practice room, Berry Hall, our nursery is equipped with a play room, a changing area and a sleeping room outfitted with cribs that meet the 2011 Federal regulations. We look forward to walking in faith with you and your child during this season of new beginnings.

It is the mission of our experienced and dedicated staff to partner with parents in nurturing the spiritual growth of our youngest children while in a safe and loving environment.

HOURS AND AGES

Open each Sunday morning from 9:15am to 12:15pm all year, **The Nursery** is available for babies (beginning at 8 weeks old) until they are walking or are 15 months old.

When a child is fully walking, she or he is promoted to our **Toddlers Room**, #104.

Our **Two's Room**, #105, is next door to the Toddlers.

WHAT TO BRING

Please bring any supplies your child may need while staying with us. This might include bottles, sippy cups, pacifier, diapers, a change of clothes, etc. You may place your child's belongings in the cubbies labeled with his/her name. Label the outside of the diaper bag, bottles, cups, etc. with your child's name.

DUE TO THE POSSIBLE DEVELOPMENT OF ALLERGIES, WE DO NOT OFFER FOOD TO BABIES WHO ARE IN THE NURSERY. Please provide detailed written instructions if you want our staff to mix formula for a bottle.

LACTATION ROOM

We have two locations for nursing mothers to tend to their babies. The first is located adjacent to the nursery, next to the elevator. The second is in the sleeping room of the Nursery.

HEALTH POLICY

In order to provide a safe, healthy environment for all our children, we ask that you keep your baby with you any time he or she exhibits the following symptoms:

- Fever, vomiting and/or diarrhea within the previous twenty-four hours
- Any symptoms of childhood diseases such as scarlet fever, measles, mumps, chicken pox, whooping cough
- Any unexplained rash
- Runny nose with any persistent or colored discharge
- Any skin infection
- Pink eye and other eye infections
- Head lice (child should be free of all nits)

If your child is being treated with antibiotics, he/she should be on the drug for at least 24 hours before returning to Church.

While general first aid, such as applying band-aids to minor scrapes will be administered, our teachers, volunteers and childcare providers are not permitted under any circumstance to administer medication.

DROP OFF / PICK UP PROCEDURES

Safety is a primary concern. Please follow these procedures when dropping off/picking up your child:

When you arrive at the nursery, please sign in your child (*MUST BE DONE BY PARENT OR GUARDIAN*) and obtain a pager. When you return to the Nursery please sign out your child and replace the pager.

For purposes of safety and hygiene, do not to open the Dutch door that leads into the play area or the sleep area. Our staff will receive children and belongings at the door or ask you to take off your shoes and step into the room.

While children are in our care, parents are required to remain on the church campus grounds in case it becomes necessary to contact you.

First Floor

